



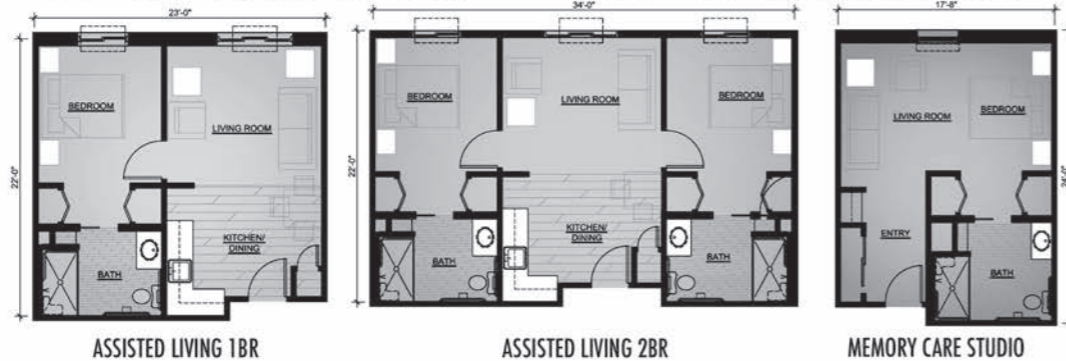
Now Open in Beaverdale!

NO BUY IN!
\$200 RESERVES YOUR
NEW HOME!

HOTEL STUDIO
\$2999

RENT MONTHLY

30 ASSISTED LIVING APARTMENTS **30 MEMORY CARE APARTMENTS**



Schedule a Lunch or Dinner Tour and
RECEIVE 2 FREE MEALS
when you visit us for the tour!

SEATING IS LIMITED. PLEASE CALL NATHAN AT 515-250-3052 TO SCHEDULE YOUR LUNCH TOUR IN ADVANCE.
OFFER VALID THROUGH JANUARY 31ST, 2018 AT EACH OF OUR 4 LOCATIONS.

LEARN MORE! – GO TO WWW.EDENCRESTLIVING.COM OR CALL 515-777-5105



AT RIVERWOODS
2210 E PARK AVE,
DES MOINES, IA 50320
PH: 515-288-4040

AT GREEN MEADOWS
6750 CORPORATE DR
JOHNSTON, IA 50131
PH: 515-207-1984

AT SIENA HILLS
451 SW ANKENY RD
ANKENY, IA 50021
PH: 515-776-6325

AT BEAVERDALE
3410 BEAVER AVE
DES MOINES, IA 50310
PH: 515-777-5105



QUARTERLY NEWSLETTER • WAVELAND PARK NEIGHBORHOOD ASSOCIATION • WINTER ISSUE, DECEMBER 2017

WPNA BOARD OF DIRECTORS

Pres/VP: Charles D. Chedester | charles@chedester.com
Secretary: Christ Naumann | nauma001@yahoo.com
Treasurer: Luke Mohlenhoff | lmohlenhoff@yahoo.com
Eric Burmeister | ewbds@yaho.com
Amy Wilkins | amyw203k@gmail.com
Patrick MacFarland | patrick@frammapraisal.com
Mark Johnson | pamejohnson83@gmail.com

ABOUT THE WPNA

The WPNA is a non-partisan non-profit organization in which all meetings, programs, and events are free and open to the public. It is the Purpose of the WPNA to "Enhance and maintain the quality of life in Waveland Park". The WPNA and all activities organized by the association are funded solely by the generosity of its members and business sponsors.

MONTHLY MEMBER MEETINGS

The Board of Directors holds meetings on the second Monday of each month at the Franklin Avenue Library, 6:30-7:30 p.m. All meetings are open to the public. Please contact a board member if you would like an item discussed at an upcoming meeting.

MEMBERSHIP DUES

Membership in the WPNA is open to the public. Members in good standing are eligible to vote at membership meetings and weigh in on other important decisions that impact the quality of life in our neighborhood. Individual dues are \$15 per year, business dues are \$50 per year, payable by check or via PayPal online at www.wavelandpark.org. Annual dues are being collected now!

WPNA QUARTERLY NEWSLETTER

The WPNA quarterly newsletter is the official publication of the Waveland Park Neighborhood Association. For questions, comments, or content submissions, contact:

Waveland Park Neighborhood Assoc.
P.O. Box 30112
Des Moines, IA 50310

Phone: (515) 650-9060
Web: www.wavelandpark.org
Email: info@wavelandpark.org
Twitter: WPNADSM
Facebook: WPNAfb
Editor: Kate McGovern
katemcgov9212@gmail.com
(515) 577-2084

A LETTER FROM THE WPNA PRESIDENT

Hello Awesome Neighbors!

Winter is almost upon us! Although we haven't seen any snow yet, it sure feels like it could come anytime! Colder weather typically means more indoor activities, so watch the WPNA Facebook page for local events and be sure to post/share events that you would like others to know about.

YOUR Active Membership: Are YOU interested in being a consistent face at the monthly neighborhood meetings? We are in search of a few more people that can help us monitor & tackle the activities, events and committee projects that the WPNA neighbors feel are important. Our neighborhood can only stay vibrant, safe, fun & engaging when we collect and supply feedback to those who need to hear from us! January 8th will be our membership meeting & election. Please forward your info and/or the info of people you would like to see serving our community to info@wavelandpark.org or (515) 650-9060 so we can get everyone included on the notifications that get sent out.

WPNA FB page & Website: We have been using FB more often than the website, but do watch for more updates & changes to our website. Thanks to some great neighbors for volunteering and especially the efforts of Quang & Perry from Mittera Group...we should see our website become more and more valuable in the upcoming months.

Our Neighborhood DMPD Officer: Help us thank Chuck Guhl for his service to the WPNA

and to Des Moines area as a whole...thank you & best of luck with your upcoming retirement! I would like to welcome Officer Stephanie Swartz from the Des Moines Police Department as our new neighborhood based service delivery unit. Officer Swartz has already been reaching out to the WPNA and will be trying to make each of our monthly meetings so we can keep each other up to speed with our neighborhood happenings.

Perkins Elementary: PTA President Jen Chedester asked that I convey a big Thank You to everyone who help plant, weed, water & maintain the new native prairie plots on the SW & SE side of the Perkins property! The prairie plants did better with the hot & dry conditions this summer than was initially expected. Be sure to check them out as you walk/drive by. The mulch paths & plants will need some helping hands in the spring & summer next year, so please let her know if you are interested in helping out. Contact Jen at JenChedester@gmail.com or 515-360-0274.

Enjoy your family, friends & neighbors this holiday season. If you have questions or concerns regarding our neighborhood, or if you would like to get involved or serve on the WPNA Board, please feel free to contact us! We can be reached at: info@wavelandpark.org or (515) 650-9060.

See you soon,
Charles D. Chedester
President, WPNA



Holy Trinity
Catholic Church & School
Where our hearts and our doors are open to Christ.
2926 Beaver Avenue • www.htschool.org

Join Us

Thursday, January 18th
Kindergarten Round Up • 7:00-8:00 pm
Preschool Information Night • 5:30-6:30 pm

Sunday, January 28th • 11:30 am - 1:00 pm
Open House for Preschool - 8th grade

3 & 4-year-old Preschool Programs • Developmental Kindergarten
Wrap-around child care • Tuition assistance for K - 8th grade



Ben Peterson, DDS & Kevin Baker, DDS

Dr. Kevin Baker and Dr. Ben Peterson have combined their practices to form Waveland Family Dental. The doctors and staff are proud to continue to provide the same high-quality, compassionate care in a modern, state-of-the-art facility.

Waveland Family Dental is easily accessible from I-235 and serves patients from all over the greater Des Moines area. New patients are being accepted. Call today to schedule an appointment!

Modern dentistry with personalized care for the whole family!

General Dentistry • Cosmetic Dentistry • Implants • Periodontal Treatment
Dentures • Crowns • Bridges • Oral Surgery • Emergency Care

Waveland Family Dental Mon & Wed 7am-7pm
4232 University Avenue, Des Moines, IA Tue & Thu 7am-5pm
515-277-4461 | www.wavelandfamilydental.com Fri 7am - 12:30pm

STREETSCAPE RIBBON CUTTING DEC. 7TH

Yeah! The 42nd Street Streetscape Project is nearly wrapped up. CenturyLink is finishing their work on the west side of the street, trees have been planted, and sod has been laid.

Please mark your calendars to join the Roosevelt Cultural District Board, city officials, shop owners and our community as we celebrate during a ribbon cutting event on Thursday, December 7 from 4:15 – 6:15pm. Please invite your neighbors to attend and help us get the word out! Check it out on Facebook at www.facebook.com/events/191351738105197/.

MEET OFFICER STEPHANIE SWARTZ



Waveland Park has a new Neighborhood Police Officer - we asked her a few questions to get to know her better!

Q: What is your official title and how/when did you start working for the Police Department?

A: Senior Police Officer. I worked in molecular biology/genetics research for 12 years before

becoming an officer. I wanted to find a job with more tangible results at the end of the work day and more public contact. I settled on police officer and after 5 tries was hired by Des Moines. Q: Tell us about someone who has influenced your decision to become a police officer.

A: My wife. She was and is an amazing nurse and always had these wonderful stories about people she had been able to help. I am a huge chicken about needles so I knew nursing was out, but I started looking around for a public service job that fit.

Q: What do you find most challenging about being a Police Officer?
A: Staying hopeful and positive when our job involves seeing the worst that people can do and the worst that can happen to them.

Q: What is your favorite part of the job?

A: That moment when you change something – someone's view, someone's day, maybe even someone's life.

Q: What's the best/worst thing to happen since you started working with the Des Moines Police?

A: Best day ever - the day I helped push a car in a neighborhood not known for friendly police relations. One of the neighborhood members was so surprised he came up to me to tell me thank you. Worst day ever – The day we lost Sgt. Bemino 11/2/16.

Q: What might (someone) be surprised to know about you?

A: I have 11 grandkids.

Q: The interest in neighborhood crime seems to be growing. Why do you think that is?

A: I think neighbors recognize the strong quality of life they have and they don't want that to begin to erode.

Q: What would you tell someone who is concerned about safety in the neighborhood?

A: Observation and communication are key. Be our eyes and ears.

Q: If you weren't a Police officer, what would you be doing instead, or what would your life be like?

A: I have always wanted to be a foreign correspondent.

Q: What do you do when you aren't keeping Des Moines safe?

A: Swim with the grandkids, bike, and kayak.

Q: Tell us about your family.

A: My wife is an inpatient psychiatric nurse at Mercy. We have been together for 23 years and have four now-grown children who in turn have blessed us with eleven beautiful grandkids.

If you see Officer Swartz around the neighborhood, stop and say hi. She would love to meet you!

PROMOTE YOUR BUSINESS IN THE WAVELAND PARK NEWSLETTER

This newsletter is published quarterly by the Waveland Park Neighborhood Association. Each issue is delivered to over 1200 homes and businesses in Waveland Park and is the only publication that reaches the entire neighborhood.

We welcome and appreciate all of our advertisers who support our neighborhood association and sponsor this newsletter. If you would like to become an advertising sponsor or have other special promotional needs, please let us know how we can help!

Contact the Editor: Kate McGovern
katemcgov9212@gmail.com
(515) 577-2084

2018 ADVERTISING DEADLINES

ISSUE DATE	ADS DUE
March 12, 2018	Feb. 12, 2018
June 11, 2018	May 18, 2018
Sept. 7, 2018	Aug. 10, 2018
Dec. 10, 2018	Oct. 8, 2018

AD SUBMISSION REQUIREMENTS

- Accepted file formats are: PSD, Ai, EPS, JPG, TIFF, PDF.
- All advertising files will be converted to B/W or grayscale for printing.

2017 AD RATES & SIZES

Ad Size	Price	Dimensions
1/1 Full Page	\$400	8.000w x 10.50h
1/2 Page Horizontal	\$200	8.000w x 5.187h
1/2 Page Vertical	\$200	3.937w x 10.50h
1/4 Page Horizontal	\$100	8.000w x 2.530h
1/4 Page Vertical	\$100	3.937w x 5.187h
1/8 Page Horizontal	\$50	3.937w x 2.530h

ASK US ABOUT SPECIAL SPONSORSHIP OPPORTUNITIES

- Large or multiple run ads with your WPNA business membership
- Ads in conjunction with event sponsorships
- Providing us with newsletter content that is directly related to your business
- Special opportunities for businesses new to the Waveland Park Neighborhood.
- Special opportunities for WPNA business members

WAVELAND FAMILY DENTAL ON CHILDREN'S DENTISTRY

As parents, we want to do what's best for our children. In this newsletter, Waveland Family Dental will give parents tips on how to keep their children's mouths healthy.

When is the right time to bring my child in for their first dental visit? At Waveland Family Dental we recommend parents bring their children starting at age one. Bringing children when they are very young allows them to become familiar with the dental office and can reduce anxiety for future visits. At one year old, your child is not likely to have many dental issues, but these visits are important to educate parents on how to prevent oral disease.

Why should I spend money to have my kids baby teeth filled? Aren't they just going fall out anyway? It's true, most baby teeth are lost by 12 years old. However, baby teeth play a very important role in keeping

space for the permanent teeth that replace them. Early loss of a baby tooth may end up costing you a lot more money in orthodontic bills later. Additionally, if a cavity is not treated in a baby tooth, the baby tooth could go on to develop an infection.

What about toothpaste? How much do we use and when should we start? We recommend starting with fluoridated toothpaste once the teeth erupt. A thin smear of toothpaste, no larger than a grain of rice, is recommended for children under 3. A pea sized amount of toothpaste can be used once the child turns 3. Like adults, children should have their teeth brushed twice daily.

Waveland Family Dental treats patients of all ages. Call us today at 277-4461 or visit our website at wavelandfamilydental.com.

WHY YOUR WPNA MEMBERSHIP DUES ARE SO IMPORTANT

Did you know the City of Des Moines reaches out to individual neighborhood associations when they are considering decisions that impact residents? Traffic safety, planning and zoning, and other areas affect your home value and quality of life. The neighborhood board reaches out to members and residents and then provides feedback to the City. Being an active participant in the WPNA is the best way to make your voice heard. The WPNA has been very active in the streetscape plan in the Roosevelt Cultural District and is currently working with the city on traffic safety issues that could significantly impact your family. Without financial and volunteer support, an official neighborhood can lose its designation and with it, a coordinated way to have a voice in decisions.

What else does the WPNA do? If you like free cultural and family activities, the WPNA provides several annual events: The Easter Egg Hunt, Free Flicks, Jazz in July

and National Night Out. More activities for you and your family could become a reality, but only if residents provide financial and volunteer support.

An annual household membership is only \$15 and an annual business membership is only \$50. Advertising and sponsorship opportunities are also available. We hold a monthly meeting open to all members and residents on the second Monday of each month at the Franklin Avenue Library, 6:30-7:30 p.m. You do not have to be a member to attend, but you do need to be a member in events or join a committee to work on a specific area of interest. There are also current openings to serve on the board. Membership dues and time commitments are not significant and the WPNA can only survive and thrive if neighbors participate. We hope you consider becoming a member and we hope to see you soon!

MEMBERS MAKE A DIFFERENCE — HELP KEEP WAVELAND PARK WONDERFUL!

If you've participated in our events, enjoy receiving this newsletter, or want to help us maintain our beautiful neighborhood, please join the WPNA today! Dues are annual, providing membership from January 1 to December 31. Dues are not prorated throughout the calendar year. Members will receive an annual dues reminder at the end of the year.

Names: _____ Date: _____

Business (optional): _____

Address: _____ City: _____ Zip: _____

Phone: _____ Individual/Family Membership \$15.00

E-mail: _____ Business Membership \$50.00

This is a: Renewal New Membership Additional Contribution of \$ _____

Please make checks payable to WPNA and mail to: WPNA P.O. Box 30112 Des Moines, IA 50310
Payment via PayPal is also available online at wavelandpark.org on the *Membership* page.



Helping you find home mortgage rates and terms you can feel financially confident about.

Charles D. Chedester
Certified Residential Mortgage Specialist
& Licensed Mortgage Originator

Midwest Family Lending

2753 99th Street | Urbandale, IA 50322
P: 515.221.0321 ext. 104 | F: 866-424-0683
Charles@MidwestFamilyLending.com

COMPANY NMLS# 4622. INDIVIDUAL NMLS# 8636